

Install the Bricsys Network License Manager

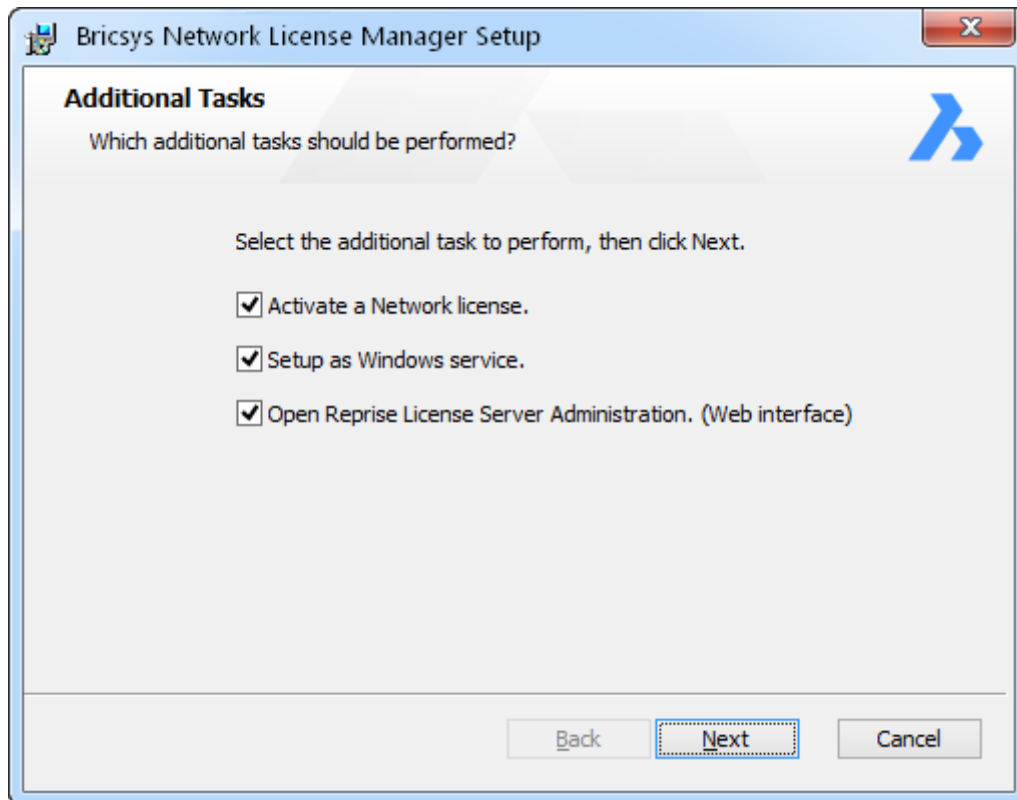
Download and install the Bricsys Network License Manager on the computer that will be used as network license server.

[Download Bricsys Network License Manager \(Windows\)](#)

Double-click the installation MSI file in order to proceed with the installation:

1. Accept the terms of End User License Agreement.
2. Accept the Destination folder.
3. Click the Install button.

The Additional Tasks dialog displays 3 options. If checked, these options will be performed after the installation.



Activate a Network license

After the installation, opens the Bricsys Network License Manager , asking you to activate a Network license.

You can later open the Bricsys Network License Manager by clicking the License activation shortcut in the Start menu.



Setup as Windows service

Each time you start Windows, the license server will be automatically started as a service.

Open Reprise License Server Administration (Web interface)

After the installation, open the Reprise License Server Administration web interface where you can manage all about the network license.

You can later open the Reprise License Server Administration by clicking the License Server Administration shortcut in the Start menu.

Note: By default, these 3 options are disabled when installing via the command line. [See Installation from the command line.](#)

New installation

In the Additional Tasks dialog, all options should be checked.

To install a new network license on an existing license server

1. In the Start menu, click the License activation shortcut to open the Bricsys License Manager .
2. In the Bricsys License Manager , enter the new network license, then click the OK button.
3. In the Start menu, click the License server administration shortcut to open the Reprise License Server Administration .
4. In the Reprise License Server Administration , click the Reread/restart servers option in the left menu.
5. Click the REREAD/RESTART button.

To upgrade the Bricsys Network License Manager

Download and install the Bricsys Network License Manager on the computer is used as network license server.

In the Additional Tasks dialog, all options should be unchecked.

The installation restarts the license server.





Installation from the command line

The Network License Manager can be installed from the command line.

By default, options Activate a Network license , Setup as Windows service and Open Reprise License Server Administration (Web interface) are disabled when installing via the command line.

To enable these options, use the respective parameters `ACTIVATELICENSE` , `INSTALLSERVICE` and `OPENWEBINTERFACE` .

For example, `msiexec /qb /i Bricsys-NetworkLicenseManager.msi ACTIVATELICENSE=1 INSTALLSERVICE=1` will just show the activation dialog and install as a service without showing the web interface.

For more options, type: `msiexec /?` at the command prompt.

NOTES On the Microsoft website, you can find [more information](#) about the `msiexec` command.

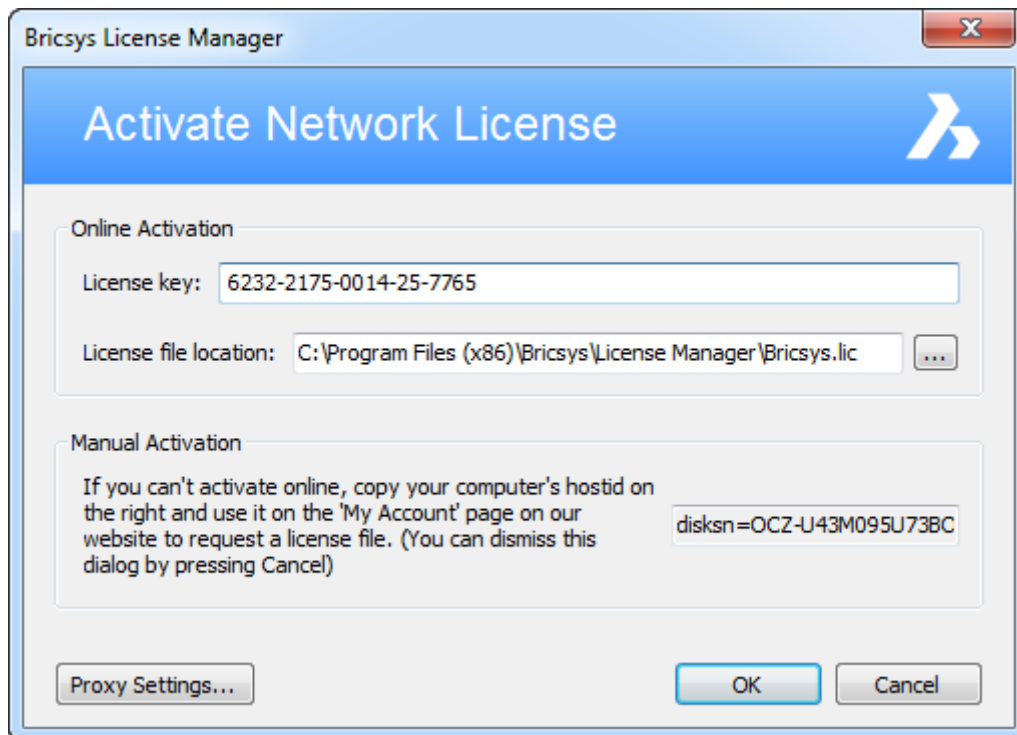
Activate the Network license

The Network license must be activated on the license server.

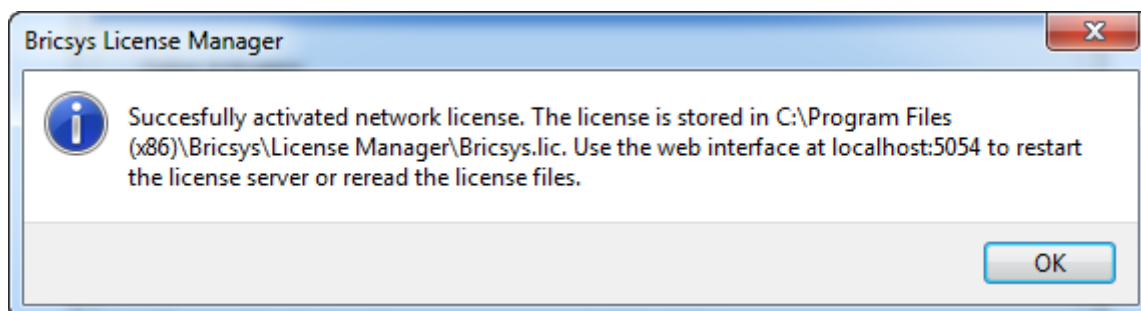
If your computer is not connected to the Internet, activation can be done manually via another computer (which is connected to the Internet). See [Activate a Network license manually](#).

1. In the Start menu, click the **License Activation** shortcut. The Activate Network License dialog box opens.





2. In the License key field, enter your Network license.
3. In the License file location field, the location of the license file must be the Bricsys Network License Manager installation folder.
4. Click the **OK** button.



Note: Network licenses cannot be deactivated.



Start the Network license server

The Network license server is automatically started/restarted after the installation. However, you can start it manually if necessary.

In the Start menu, click the **License Server** shortcut.

The server is now started and can be now configured via the [Network License Server Administration](#).

Once the Network license is activated and the server is started, the server is ready to serve licenses.

It is now possible to [use the Network license](#) in BricsCAD, on a client computer.

